

The Alleco logo features the word "Alleco" in a bold, blue, sans-serif font. A stylized green wave graphic is positioned above the letters "e" and "c".

Providing solutions



# ALLTAB<sup>®</sup> 2.0

Military & Professional model (MilPro)

## User Instructions

Maximum operating depth for Alltab 2.0 (MilPro) is 150 meters / 492 feet

---

distributed by **AQUA LUNG<sup>®</sup>**



## Alltab User Instructions

Alltab is a device that allows the use of a tablet computer both above and under water. It is designed and produced by the Finnish company Alleco Ltd. to provide reliable and long service.

## Important Safety Instructions

**YOU MUST READ** this User Instruction for your Alltab, as well as the Samsung tablet user instructions, and the Safety Guide (links provided below or upon request in pdf-format from [sales@alleco.fi](mailto:sales@alleco.fi)). Failure to do so may lead to improper use, serious injury or death. This document applies to the protective housing. It is important that you read this manual before using the device to ensure its safe and proper use.

It is equally important that you also read the instructions of the tablet computer.

- [For EU and rest of the world \(except USA\) http://downloadcenter.samsung.com/content/UM/201507/20150729150055211/SM-T710\\_UM\\_EU\\_Lollipop\\_Eng\\_Rev.1.0\\_150724.pdf](http://downloadcenter.samsung.com/content/UM/201507/20150729150055211/SM-T710_UM_EU_Lollipop_Eng_Rev.1.0_150724.pdf)
- [For the USA http://downloadcenter.samsung.com/content/UM/201508/20150829030023363/WIF\\_SM-T710\\_TabS2\\_EN\\_UM\\_LL\\_5.0\\_OFB\\_FINAL\\_AC.pdf](http://downloadcenter.samsung.com/content/UM/201508/20150829030023363/WIF_SM-T710_TabS2_EN_UM_LL_5.0_OFB_FINAL_AC.pdf)

You must also read the Safety Guide for the Samsung device. It is available at

- [http://downloadcenter.samsung.com/content/UM/201511/20151127170807250/Safety\\_information\\_Rev.1.7.8\\_151126\\_UU.pdf](http://downloadcenter.samsung.com/content/UM/201511/20151127170807250/Safety_information_Rev.1.7.8_151126_UU.pdf)

Maximum operating depth for Alltab 2.0 (MilPro) is 150 meters / 492 feet in sea water.

**WARNING!** THIS IS NOT A DIVE COMPUTER. Make sure that you use proper instrumentation including a depth gauge, compass, submersible pressure gauge, timer or watch, and have access to decompression tables whenever diving with Alltab.

**WARNING!** Using any software or application on Alltab is not a substitute for proper dive training, navigational equipment or back-up instrumentation. Make sure that you use proper instrumentation including a depth gauge, compass, submersible pressure gauge, timer or watch, and have access to decompression tables whenever diving with Alltab or using any software or application on Alltab.

**WARNING!** Always use realistic SAC rates and conservative turn pressures during dive planning. Overly optimistic or erroneous gas planning can result in the exhaustion of breathing gas during decompression or in a cave or a wreck.

**WARNING!** ENSURE THE WATER RESISTANCE OF THE DEVICE! Water inside the device or battery compartment will seriously damage the unit. Only an authorized Alleco Ltd. dealer or distributor should do service activities.



## Contents of the Package

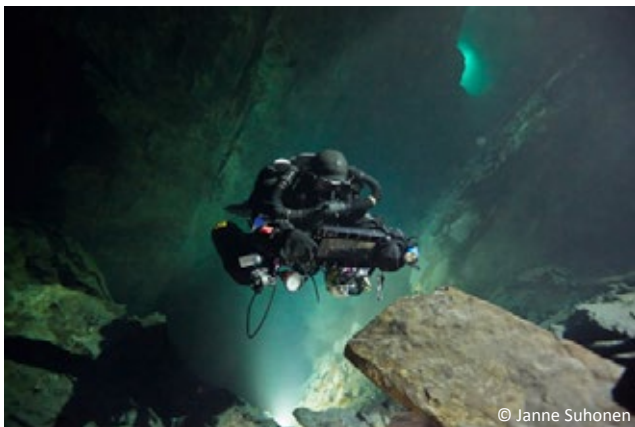


- Protective storage and carrying case
- Alltab housing with pre-installed tablet computer (Samsung Galaxy Tab S2 8.0 wifi)
- Qi Standard wireless power charger
- Quick start guides (Alltab, Alleco Navigator, Allure data collection software)
- Alltab 2.0 User Instructions

**Note!** Each Alltab unit has been tested in a wet pressure chamber before shipping. Some water droplets may appear outside the touchscreen display membrane.

## Identification

The serial number can be found at the back side of the device.





## Usage

Charge the tablet before use by placing the Qi Standard wireless power charger in the dedicated slot on the backside of the device and plug it into a USB power source. Make sure that the smooth side is against the tablet and that the blue LED is blinking.



Start the tablet by pressing the metal Start-button on the side for 5 seconds (the topmost of the three buttons). The tablet can now be used both under and on top of the water with bare fingers, most diving suit gloves and special touch screen pens. Because the touchscreen is isolated from water by a cavity filled with dielectric fluid, you must push the display membrane against the touch screen to operate the computer.

Wireless data-transfer and communication properties only work at very short distances in water. You can connect external devices to your Alltab using Wifi over short distances under water (distance less than 10 cm). The tablet's built-in GPS does not receive signals underwater, either. To utilize these functions also while diving, you need to have Alleco's communication and positioning buoy, which is sold separately.

**Note!** We suggest that you take time before diving to get used to the way the touch screen is working.

**Note!** Always **rinse the device with fresh water after it has been used**. Failure to do so might result in build-up of salt particles, dust, sand, or similar in cavities, and result in the reduced life-span, or damage to the product.

**WARNING!** Do not push the **display membrane** with hard or sharp objects, as this can damage the display membrane.

**WARNING!** Do not push any sharp objects through the holes at the backside of the Alltab, as this can damage the **pressure control membrane**.

The Alltab Pro is rated to 150 m (492 feet) of sea water. Deeper usage will void warranty.



## Safety

- Use a Qi-standard wireless charger only to charge the Alltab.
- Check the device for leaks each time before exposing it to water. If you notice an oil leak, have the device checked by a service person authorized by Alleco Ltd.
- Always follow prevailing safety instructions while diving.
- Alltab does not substitute a diving computer. Use decompression tables and/or diving computer to plan and monitor your dive.
- Attach Alltab to your diving gear in a way that does not disturb your diving.
- Do not push or scratch the touch screen with hard or sharp objects.
- The dielectric fluid used between the touch screen and the display membrane is non-toxic, medical grade mineral oil. It may be harmful to sea birds, if the oil stains their feathers.
- A puncture in the display membrane outside the touchscreen results in the dielectric fluid to leak out and eventually be replaced by water. The touch screen will stop to respond, and the tablet computer will be harmed. To protect the nature, remove the leaking device from the water and send it to be serviced for a display membrane and dielectric fluid replacement.

## Service

Alltab is best maintained if it is serviced, when needed, by authorized personnel. Any service made by the user voids warranty. A list of authorized Alltab service units is available through Alleco Ltd.

Some air bubbles may be left under the display membrane. Such bubbles do not affect the functionality of the tablet.

### Air bubbles can be removed by following these steps:

1. Locate one of the bleeding/filling plugs.
2. Drive the bubble to the plug.
3. Open the plug by turning it counter clockwise to allow the air bubble to come out until small amount of oil appears to the side of the bleeding hole.
4. Close the plug by turning it clockwise.
5. **WARNING!** To avoid breakage of the threads, use only little force to tighten the plug.





## Disposal

To dispose of Alltab, take it to the recycling facility for electronic waste.

## Technical Data

- Operating temperature in water -2 °C ...+40 °C
- Depth rating (bar) 16 bar
- Weight 1425 g.
- Dimensions (L, W, H) 264 x 175 x 21 mm

## Warranty

Alleco Ltd products come with a ONE (1) YEAR Limited Warranty from the date of the retail purchase by the original end-user. If a material or workmanship defect arises and a valid claim is received within the Warranty Period, Alleco Ltd will replace the case only.

Alleco Ltd cannot be held liable for damages to personal property due to misuse, improper care, or maintenance of the case. Alleco Ltd warranty does not, under any circumstance, cover the replacement or cost of any electronic device or personal property outside of the case. Full Terms and Conditions are available from Alleco Ltd.

## Contact information

Alleco Ltd, Veneentekijäntie 4, FI-00210 Helsinki, Finland  
Phone: +358 45 679 0300  
E-mail: [sales@alleco.fi](mailto:sales@alleco.fi)  
Internet: <http://alleco.fi>

©Alleco Oy 03-2016

All information in this document is subject to change without prior notice.



***Alleco Ltd.** was founded in 1989 and is Finland's leading company specialized in the marine underwater environment. The company is specialized in consulting services and the development of new tools and high quality gear for the professional diving industry.*

*We only produce products that we also use ourselves in our daily work in the harsh conditions in Northern Europe.*

# Alleco

Providing solutions

*Alleco Ltd. Veneentekijäntie 4, 00210 Helsinki, Finland  
tel: +358 50 5484156, sales@alleco.fi, www.alleco.fi*

